

## **INVALUABLE**

For separating light products and dust from granular material

## **ADJUSTABLE**

Easy manual adjustment of the air channel wall allows for a wide range of precision settings

## **VERSATILE**

Can be used as a stand-alone unit or in combination with a separator, scourer, degerminator, oat huller or other equipment

## **ECONOMICAL**

The closed-circuit design of the ASRA saves on filters and ductwork systems



**ASPIRATOR ASRA**

## **THE ASRA ASPIRATOR WITH RETURN AIR: High Capacity, Compact Design and Easy Installation make it a Winning Choice**

### **OPERATION**

Material is spouted into the inlet of the ASRA, where a vibratory feeder then distributes the product uniformly across the entire width of the aspiration chamber. In this vertical chamber, the curtain of material is broken apart and the low-density particles are removed.

The clean, heavy material exits through the bottom of the machine. The light fraction is separated from the air in a special closed-circuit separator and then exits the machine via screw conveyor and retarding gate. The air used by the machine is recycled by a radial fan back into the aspiration chamber.

### **VERSATILITY & COMPATIBILITY**

The ASRA Aspirator is available in four sizes that include nominal aspiration chamber widths of 60, 100, 150 and 200cm (24", 40", 60", 80") and capacities of up to 150 metric tons per hour of wheat.

The ASRA functions as a stand-alone unit or in combination with other equipment such as a separator, corn degerminator, oat huller, scourer or infestation destroyer.

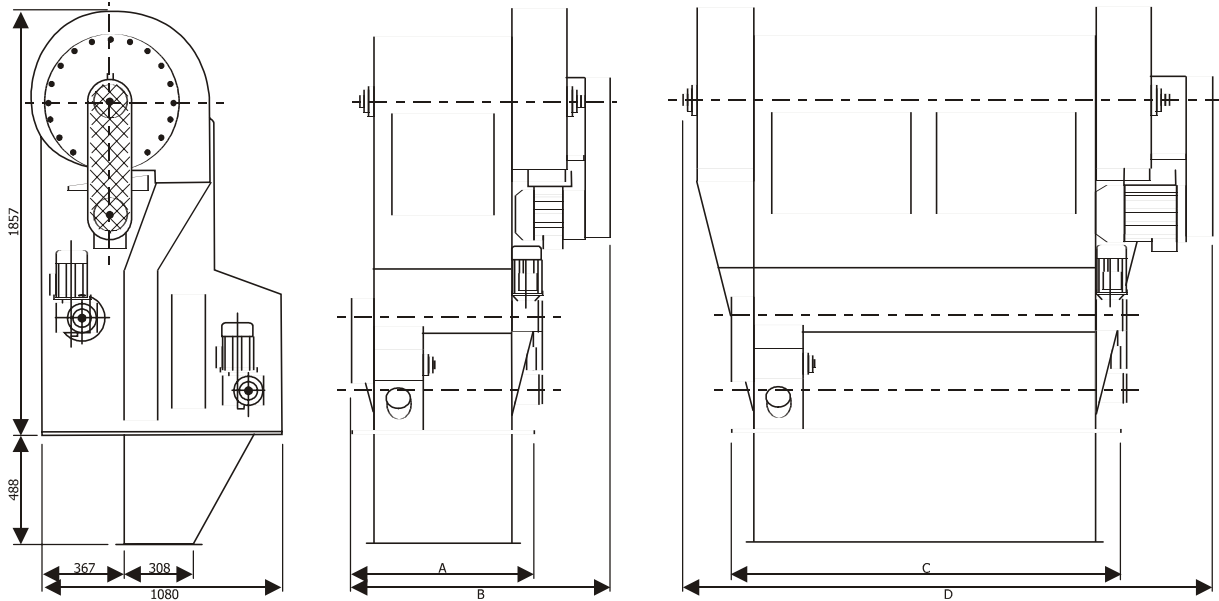
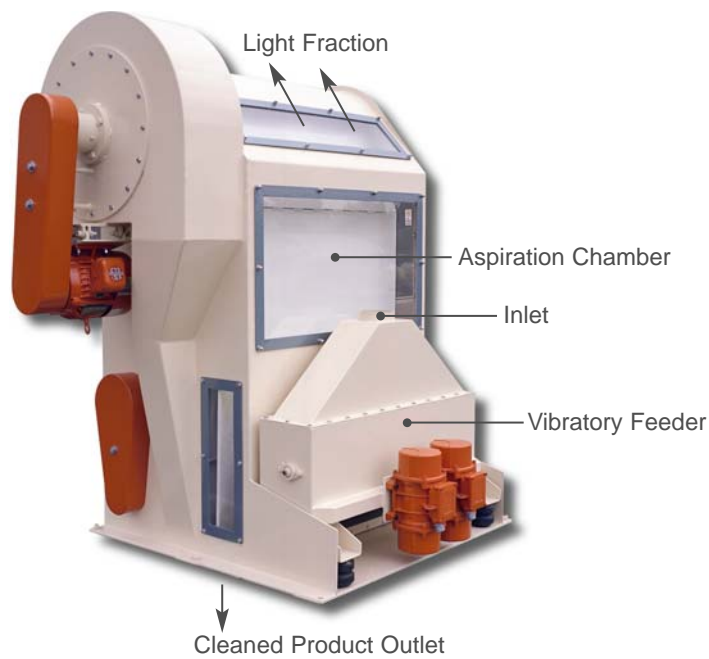
**CODEMA**  
L L C

11790 Troy Lane North  
Maple Grove MN 55369 USA  
763.428.2266 Fax: 763.428.4411

info@codemallc.com  
www.codemallc.com

# ASPIRATOR ASRA

## DIMENSIONAL DATA



Model	Dimensions				HP	Capacity (Ts/Hr W/heat)		Exhaust Air (m <sup>3</sup> /m)		Weight	
	A	B	C	D		Cl.house	Silo	Cl.house	Silo	Net	Gross
<b>ASRA 60</b>	600	1155	800	—	3.0	to 8	to 50	5	8	537	685
<b>ASRA 100</b>	990	1555	1200	—	7.5	to 15	to 60	7	10	604	775
<b>ASRA 150</b>	1490	—	1700	2385	2x 5.0	to 25	to 100	9	12	864	1115
<b>ASRA 200</b>	1990	—	2200	2885	2x 7.5	to 35	to 150	12	15	995	1315

